



INTEQ

Company : Nexus Energy

Well : Longtom-4

Interval : 2592.00 - 3002.81 meters

Created : 29/Jul/2008 5:17:45 AM

FORMATION EVALUATION LOG

Cuttings

INTERPRETED
LITHOLOGY

Chromatograph Data

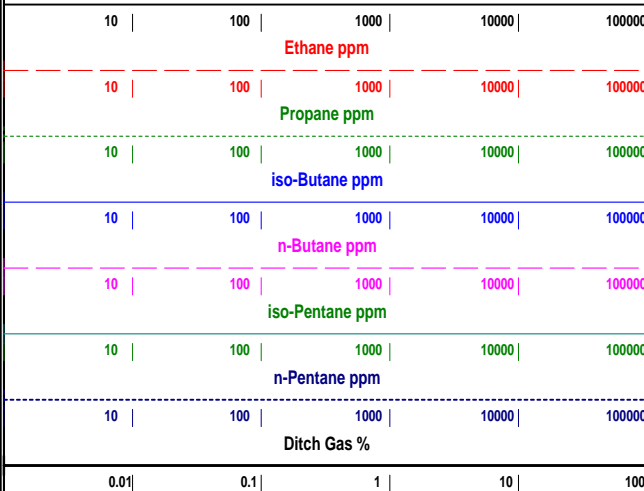
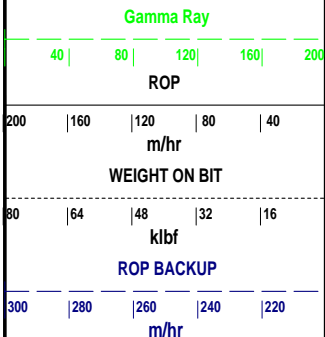
Methane ppm

Analysis

Calcimetry

LITHOLOGY DESCRIPTIONS

DIRECT FLUOR



24/07/2008

NB7: 242mm (9-1/2")
Make: Smith
Type: PDC/JY 2803
Jets: 7x16
Depth In: 2600.0 m
Depth Out: 2841.7 m
Drilled 241.7 m in 9.4hrs
Grade: 2-4-BT-A-X-I-RO-CP

2600
2610
2620
2630
2640
2650
2660
2670

Drilled Longtom-4P from 2600m

FIT @ 2604 m with 11.5ppg
EMW: 14.0 ppg @ 818 psi

MW: 12.2 ppg FV: 125
PV: 44 YP: 34
Gels: 13/18/21
O/W: 52.0/24.0

MD: 2621.5m Azi: 182.84°
TVD: 2364m Incl: 53.72°

SST: pred lse qtz gr, trns-l-trnsp, off wh, v lt gy-lt gy i/p, fri, vf-f, occ m gr, sb ang-rnnd, prly-mod srt, occ wl srt, arg mtrx, calc cmt, fr vis por, no shw

SLTST: v lt gy-lt gy, v sft-sft, occ frm, sbblky-blky, grdg to vf SST

MD: 2651.3m Azi: 183.55°
TVD: 2381.6m Incl: 53.37°

CLYST: m gy-m lt gy, brnsh gy, occ grnsh gy, sft-frm, sbblky-blky, slty

SST: lt gy-m lt gy, fri, vf-f gr, sb rnnd, prly-mod srt, arg mtrx, calc cmt, fr vis por, no shw

WOB: 10-32 klbf
RPM: 120-178
GPM: 600-722
SPP: 2726-3046 psi

WOB: 7-25klbf
RPM: 141-209
GPM: 628-766
SPP: 2367-3150 psi

MD: 2681m Azi: 184.22°
TVD: 2399.5m Incl: 52.5°

SST: lt gy-v lt gy, occ m lt gy-m gy, lse-fri, frm i/p, f- m gr, occ crs gr, sb rddd-rddd, mod-wl srt, arg mtrx, calc cmt, occ Sil cmt, occ carb Stk, fr vis por, no shw

MD: 2711.02m Azi: 184.51°
TVD: 2418m Incl: 51.43°

SST: pred lse Qtz gr, trnsi-trnsp, off wh, brnsh wh, fri i/p, f-m gr, occ crs-v cse gr, sbang-sbrddd, prly-mod srt, arg matx, tr green & blk lith, tr carb mat, fr vis por

MD: 2740.27m Azi: 184.48°
TVD: 2436.4m Incl: 50.60°

CLYST: m gy-dk gy, occ gysh blk, frm-mod hd, sbbiky-blky, occ elong, abt carb mat, occ grdg to Slst

MD: 2770m Azi: 184.85°
TVD: 2455.5m Incl: 50.01°

SST: pred lse Qtz gr, trnsi-trnsp, lt gy, brnsh wh, fri i/p., f-m gr, occ crs-v cse gr, sbang-sbrddd, prly-mod srt, arg mtrx, tr gn & blk lith, tr carb mat, fr vis por

MD: 2798m Azi: 183.57°
TVD: 2474.2m Incl: 47.70°

CLYST: m gy-m dk gy, frm, blk, rr sb fiss i/p, rr carb mat i/p, grd to SILTSTONE i/p

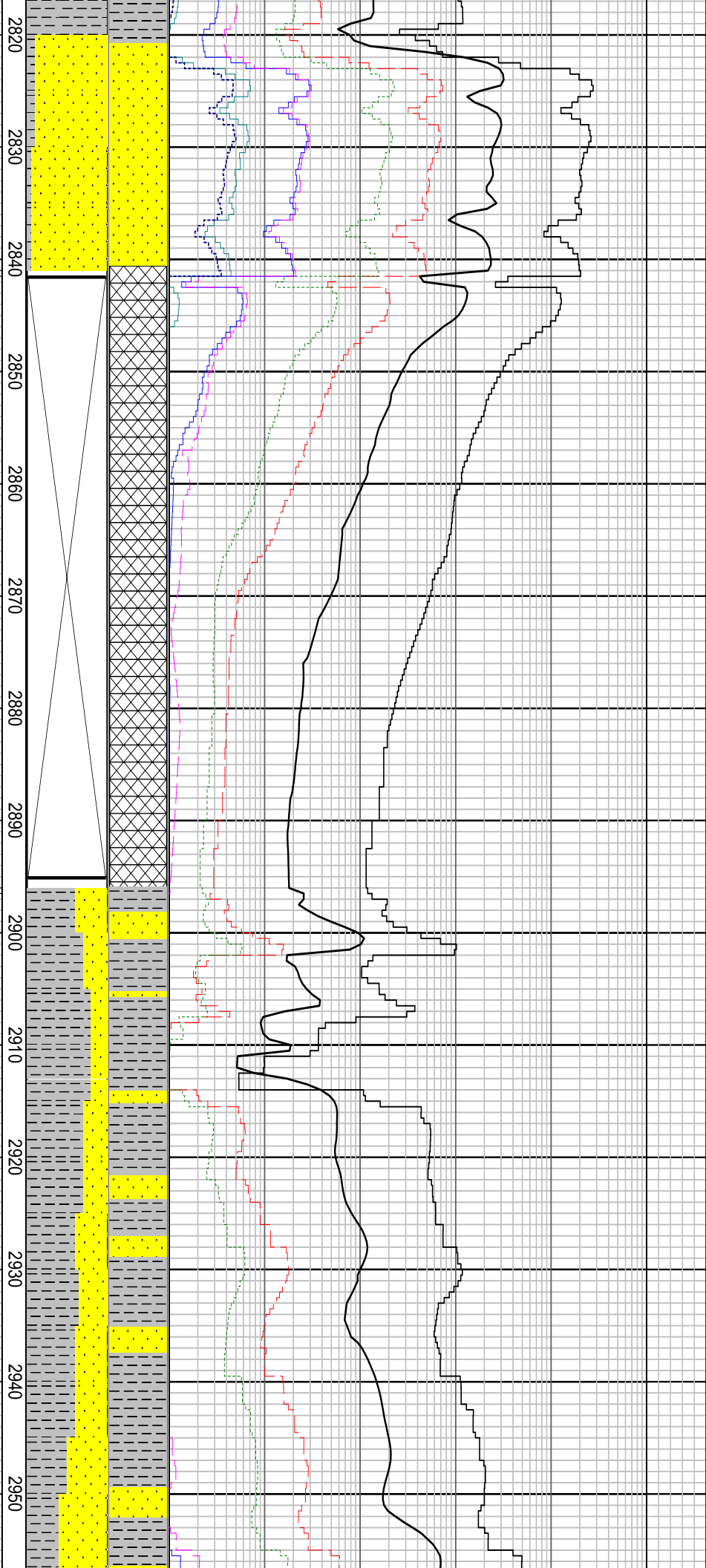
25/07/2008

26/07/2008

NB8: 216mm (8-1/2")
Make: Hughes
Type: Core/BHC-406
TFA:0.75
Depth In: 2841.0 m
Depth Out: 2896 m
Drilled 55 m in 3.6 hrs
Grade: 1-1-WT-A-X-I-NO-TD

WOB: 1-21klbf
RPM: 121-177
GPM: 30-748
SPP: 1884-3138psi
27/07/2008

NB9: 241mm (9-1/2")
Make: Smith
Type: M716SPXC
Jets: 7 x 16
Depth In: 2896.0 m
Depth Out: 2987 m
Drilled 91.0m in 7.0 hrs
Grade: xxxxxxx



SST: wh-v lt gy, clr-trnsl qtz gr, pred
sft- fri agg, f gr, sbang-sbrnd, sphr, v
wl srt, v lt gy arg mtrx, pr vis por, no
shw

Coring @ 2841.0m-2896.0m
Recovery: 99.4%

MW: 12 ppg FV: 86
PV: 43 YP: 35
Gels: 14/18/21
O/W:85.9/135.4

MD: 2857.04m Azi: 183.13°
TVD: 2514.2m Incl: 46.14°

MD: 2886.94m Azi: 182.91°
TVD: 2534.8m Incl: 46.56°

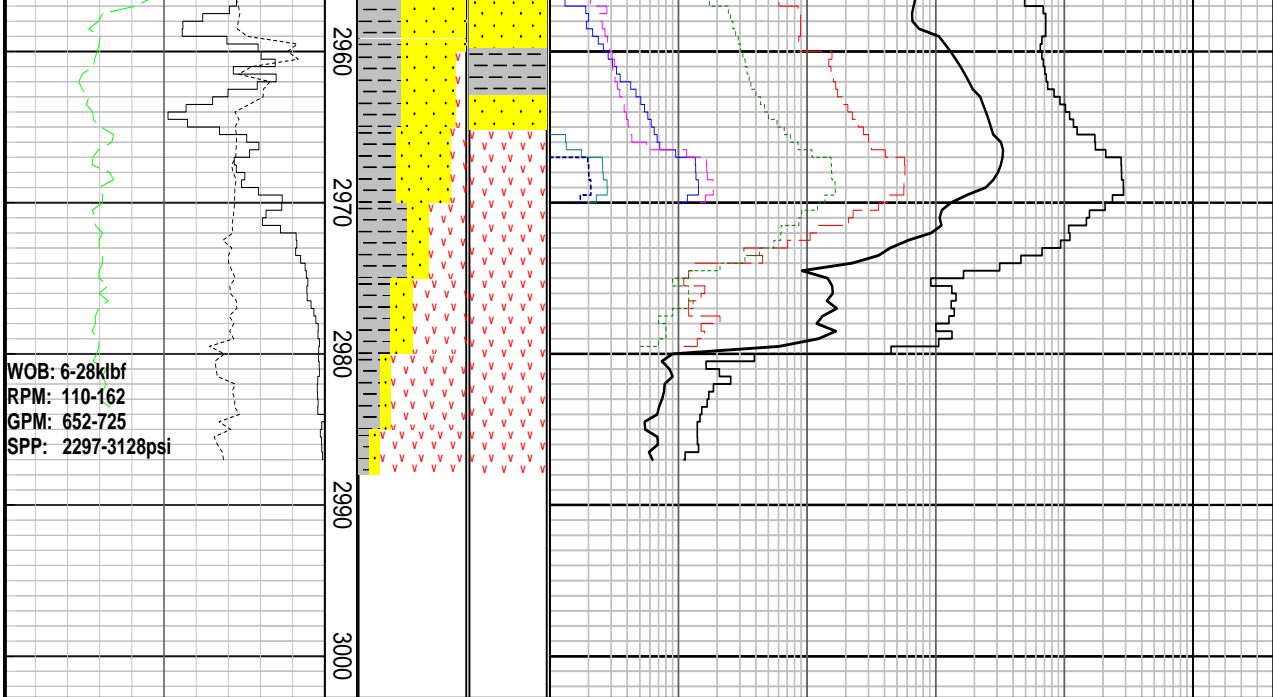
MW: 12.1 ppg FV: 128
PV: 45 YP: 20
Gels: 12/15/18
O/W:69.2/30.8

CLYST: m lt gy-m gy, mod frm-frm,
occ hd, sbbilky, com carb mat, slty

MD: 2916.37m Azi: 183.31°
TVD: 2555.1m Incl: 46.19°

SST: off wh, m gy, fri, sft-frm, mod hd
vf-f gr, sbang-sbrndd, prly-mod srtd,
arg mtrx, f carb spks, fr vis por, no
shw

MD: 2946.06m Azi: 184.18°
TVD: 2575.9m Incl: 45.04°



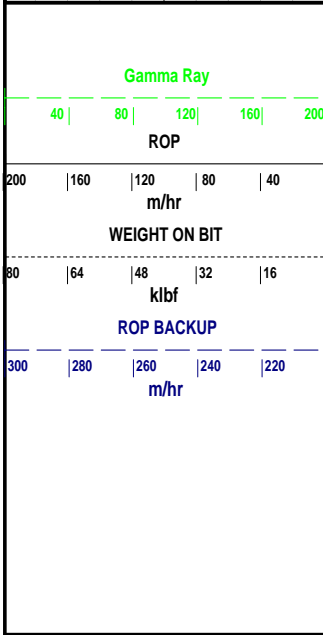
WOB: 6-28klbf
RPM: 110-162
GPM: 652-725
SPP: 2297-3128psi

SST: lt gy, m lt gy, m gy i.p.,
trnsI-trnsp, fri, frm-mod hd, f-m gr,
sbrndd-rndd, prly-mod srted, arg mtrx,
occ mott w/ carb mat, fr vis por, no
shw

MD: 2970.49m Azi: 184.59°
TVD: 2593.1m Incl: 45.14°

VOLC: wthd Bas, gysh blk, dk grnsh
gy, brnsh blk, hd-v hd, blk, occ spln,
microxln, tuf frag, occ med-crs
sbhdral Plag xls, r euhdrl Qtz xls, r
cub Pyr

Longtom-4P TD @ 2987.0m on 28
July 2008 @ 2050 hrs



Cuttings
MD meters 1:500
INTERPRETED
LITHOLOGY

FORMATION EVALUATION LOG					
Chromatograph Data					Analysis
Methane ppm					Calcimetry
10	100	1000	10000	100000	50 100
Ethane ppm					Dolomite %
10	100	1000	10000	100000	50 100
Propane ppm					
10	100	1000	10000	100000	
iso-Butane ppm					
10	100	1000	10000	100000	
n-Butane ppm					
10	100	1000	10000	100000	
iso-Pentane ppm					
10	100	1000	10000	100000	
n-Pentane ppm					
10	100	1000	10000	100000	
Ditch Gas %					
0.01	0.1	1	10	100	

LITHOLOGY DESCRIPTIONS